

○ MUSIC  city COUNSELOR

THANK YOU FOR YOUR  
PURCHASE!



Hey y'all, Laura here! I so appreciate when you please take a moment to leave a review on my resources on my TpT Store. Thanks for your support! Enjoy the resource!

♥ *laura oathout*

LET'S CONNECT!



For helpful ideas, engaging resources, and freebies, please check out my website and membership!

○ ♥ **WEBSITE:** [www.musiccitycounselor.com](http://www.musiccitycounselor.com)

♥ **MEMBERSHIP:** [www.counselorcollab.com](http://www.counselorcollab.com)



# MATERIALS NEEDED:

- Printed materials
- 6 hook-and-loop fastener dots
- Crayons or markers
- Pencils
- Scissors
- Glue sticks

# DIRECTIONS PAGE I:

This lesson will take approximately 45 minutes to teach.

## Recommended Sequence:

1. Review the PowerPoint or digital for Google Slides™ presentation. As you present each Super School Psychologist Badge, attach that cut-out badge to the Super School Psychologist.
2. Review (and display) the instructional posters with students.
3. Choose a craft, worksheet, or coloring page to close the lesson.

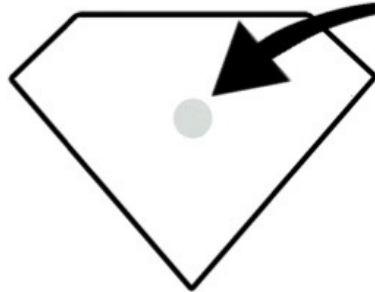
## Super School Psych & Badges Prep:

7 different options (for race, gender) for the Super School Psychologist are included in full color and black/white. Please choose the one that looks most like you. Please cut out his/her face and body and glue the head to the body. 6 different badges are included in full color and black/white. Please print them and cut them out. Please place one side of a hook-and-loop fastener dot in the middle of the badge on the body of the Super School Psychologist. Please place the other side of a hook-and-loop fastener dot on the back of each of the badges. This makes attaching the badges to the Super School Psychologist easy and quick as you teach.

# DIRECTIONS PAGE 2:



One side of the hook-and-loop fastener dot goes here



The other side of the hook-and-loop fastener dot goes on the back of each badge

## PowerPoint Presentation & Badges:

Both a PowerPoint and digital for Google Slides™ presentation are included. This presentation teaches students how their school psychologist is like a superhero. Just like superheroes have superpowers, school psychologists do, too! We wear 6 different Super School Psychologist Badges that each represent one of our Super School Psychologist Powers: helper, listener, kindness, solver, secret-keeper, and safety. The presentation teaches students about all 6 badges and the many ways that school psychologists help students. As you teach each badge, show the cut-out badge to students and ask a volunteer to attach that badge to the body of the Super School Psychologist. The presentation closes with a discussion question that asks students how their Super School Psychologist can help them. Please ask students to turn and talk with a partner to discuss this question, then share out their answer with the class.

## Posters:

8 posters are included. Please choose the poster with the Super School Psychologist that looks the most like you. Please use these posters in instruction and display them in your space.



# DIRECTIONS PAGE 3:

## Craft:

This cute craft encourages students to reflect on the 6 Super School Psychologist Badges and the ways their school psychologist can help them. Please choose the clipart Super School Psychologist that looks most like you (4 options are included) and give it to students along with the writing page. Please ask students to cut out the Super School Psychologist and decorate him/her. Then, they can glue/him her to the top of the writing page as shown in the sample. Finally, students can write on the lines about which badges their Super School Psychologist has and how he/she can help them. These make for a cute hallway display or bulletin board!

## Worksheets & Coloring Pages

Multiple options for worksheets and coloring pages are included to close the lesson. Please choose the ones that best fit the needs and abilities of your students.

Questions, comments, or suggestions? Please contact me any time at [laura@musiccitycounselor.com](mailto:laura@musiccitycounselor.com). I'm here to help! :)



# SAMPLE ACTIVITY

As you teach each badge, add it to the Super School Psych's chest!





# SAMPLE CRAFT



Name: Jessica Fuentes

## MY SUPER SCHOOL PSYCHOLOGIST

Which Super School Psychologist Badges does your school psychologist have? How can he/she use them to help you?

My Super Psychologist has 6 badges:

helper, kindness, listener, secret-

Keeper, solver, and safety. She helps

me make friends and solve problems.

She is my superhero!



# POSTERS



**My School  
Psychologist is a  
SUPERHERO!**



# SUPER Badges





# SUPER Badges





# SUPER Badges





# SUPER Badges





# SUPER Badges





# SUPER Badges





# SUPER Badges



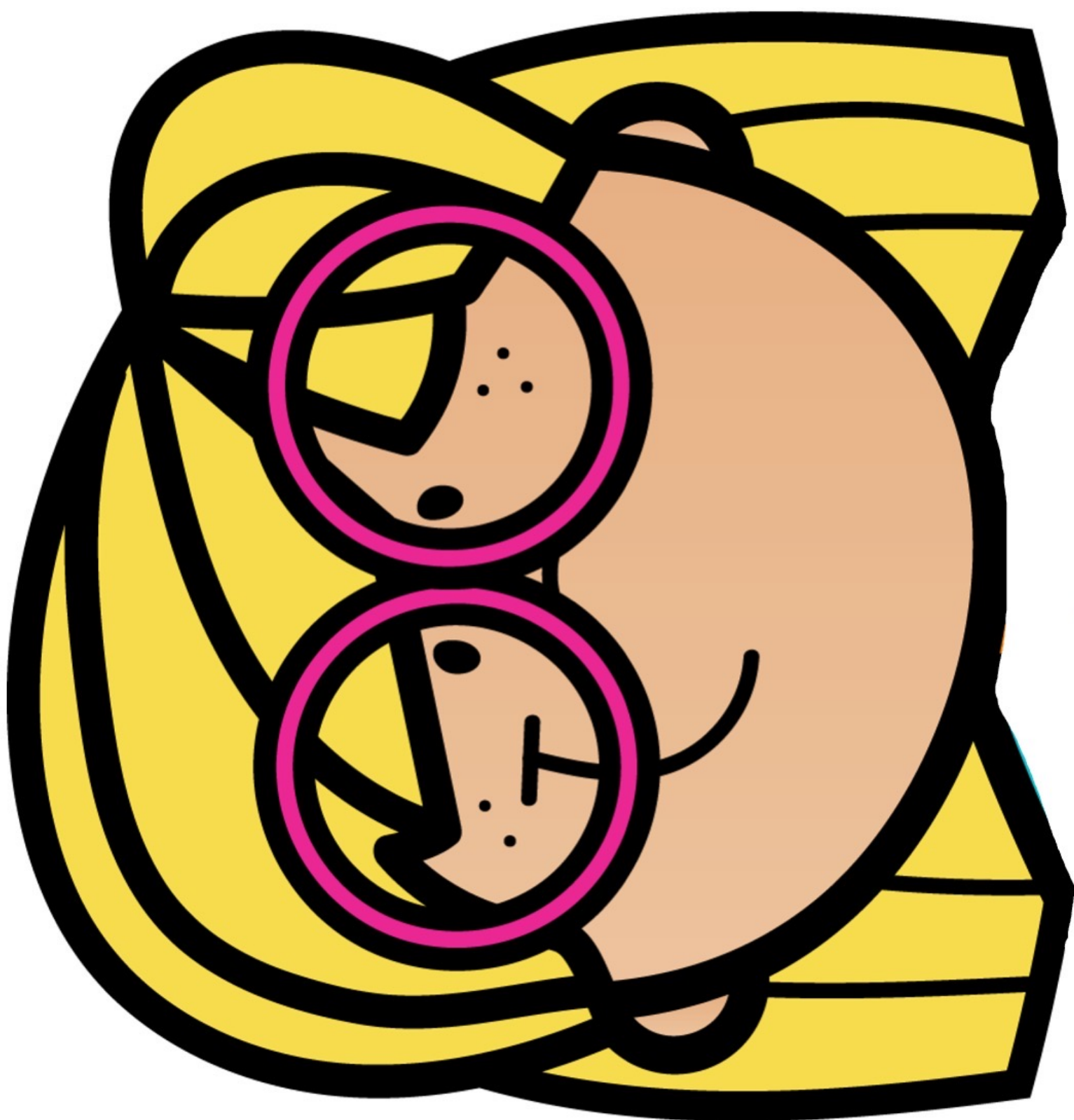
**SUPER SCHOOL**

**PSYCHOLOGIST**

**ACTIVITY +**

**BADGES**





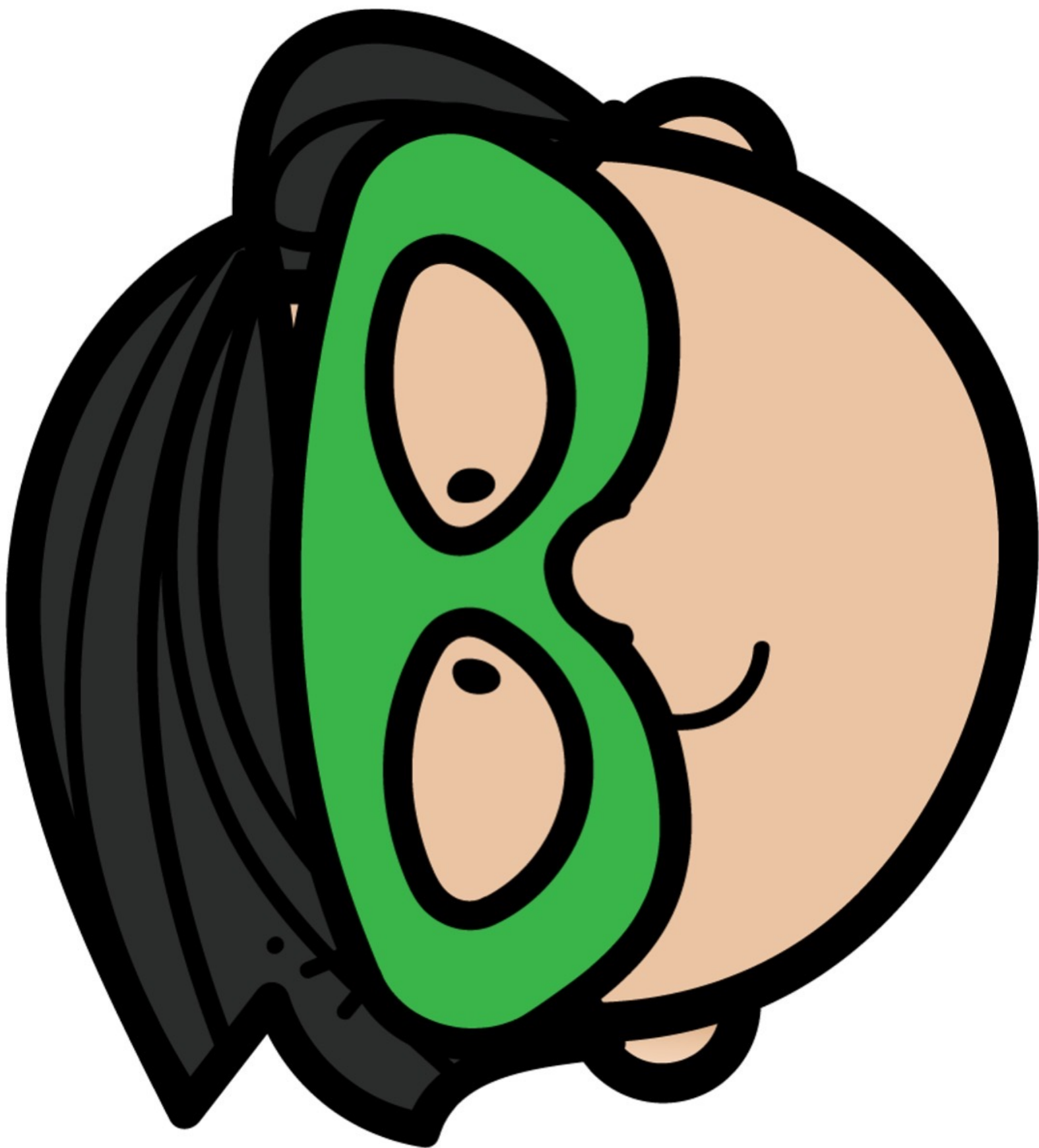






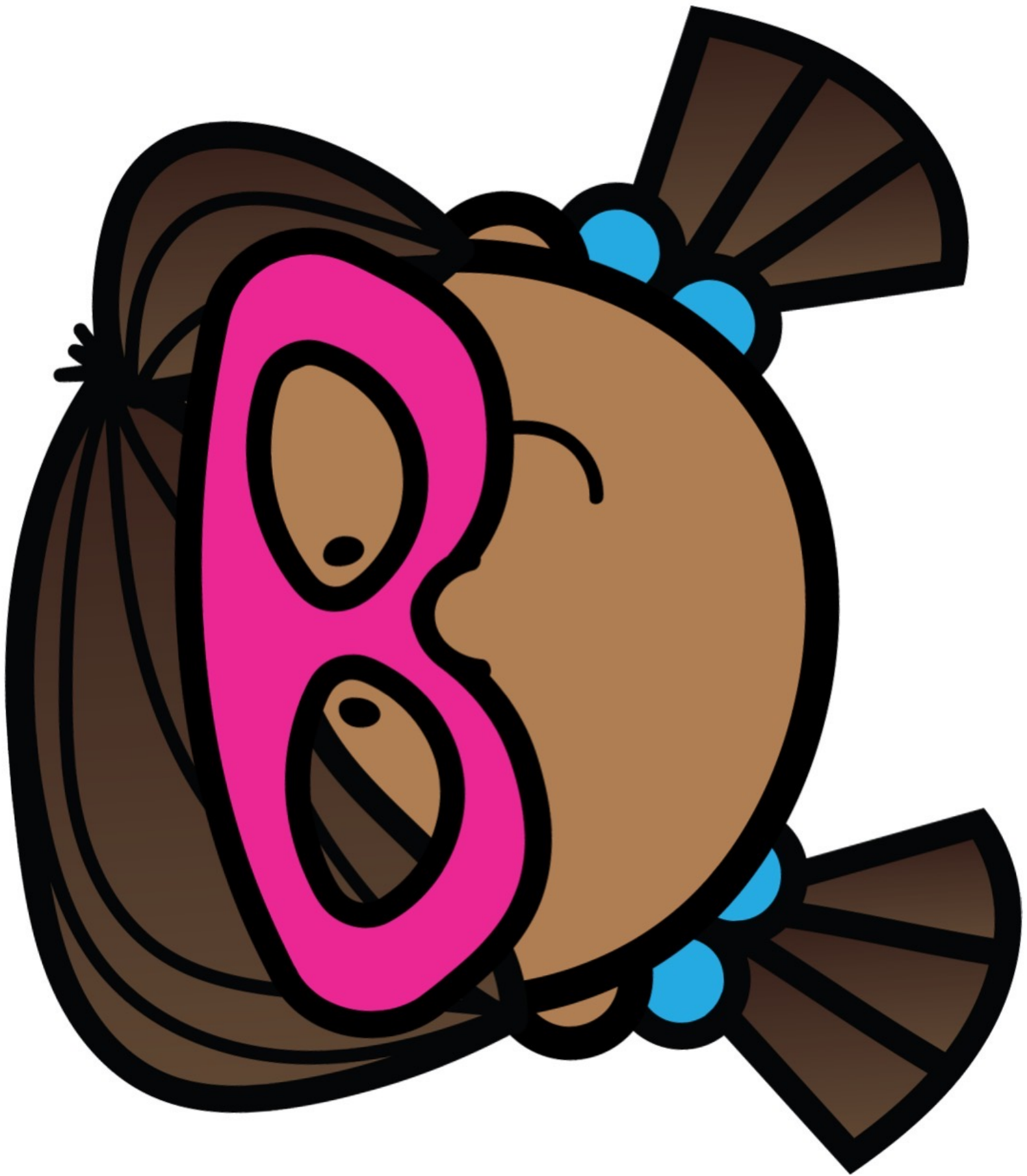














The logo is a stylized shield shape. The top half of the shield is white and contains the text 'SUPER' in large, colorful, blocky letters: 'S' is yellow, 'U' is pink, 'P' is blue, 'E' is purple, and 'R' is orange. The bottom half of the shield is light gray and contains the text 'School Psych' in black, bold, sans-serif font. The shield is surrounded by a thick orange border with a yellow dotted pattern. The entire logo is set against a light green background with a thick black curved line. On the left side, there is a partial view of a circular graphic with blue, black, and tan concentric arcs.

**SUPER**  
**School Psych**



**SUPER**  
**School Psych**





**SUPER**  
**School**  
**Psych**













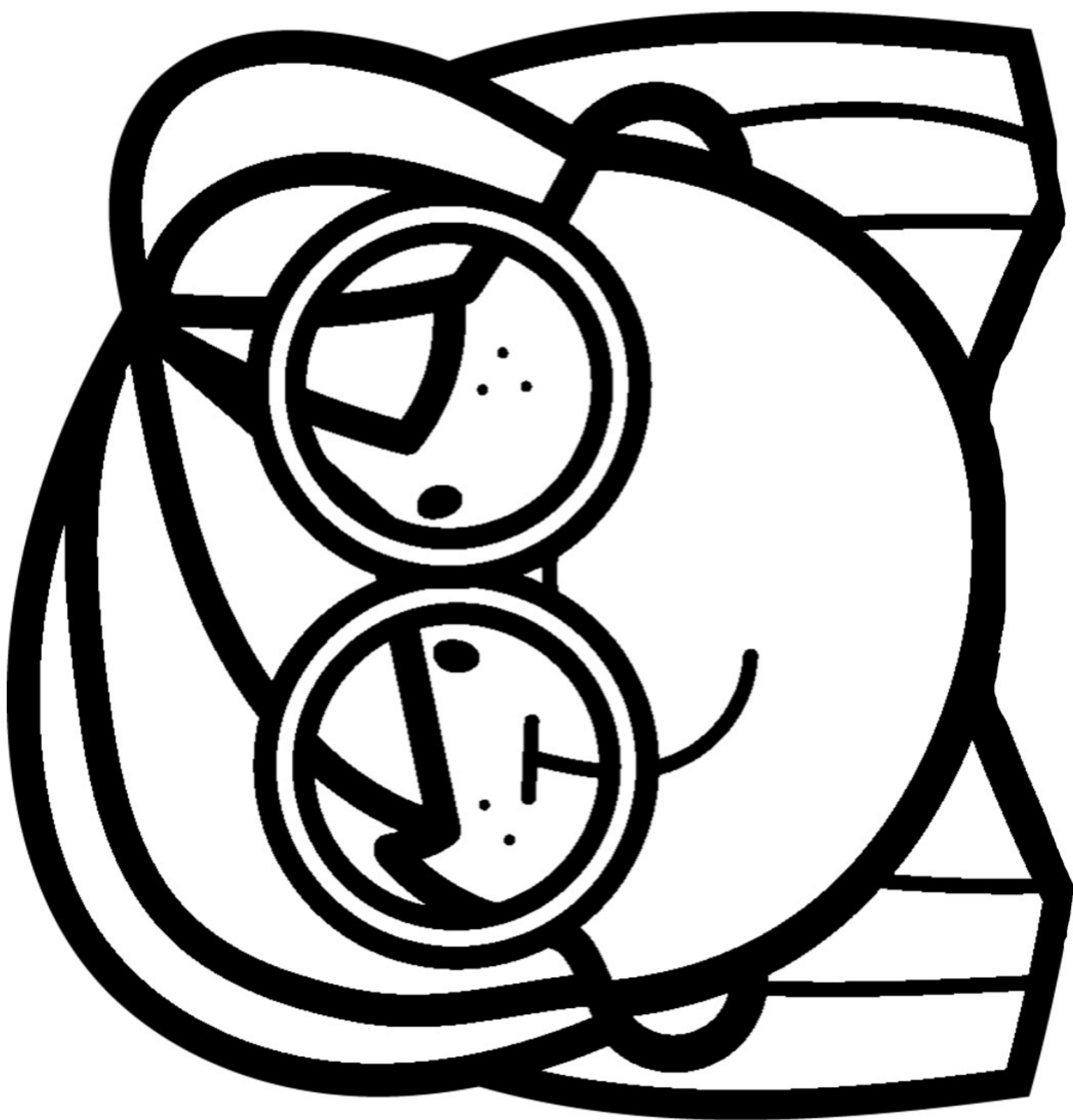




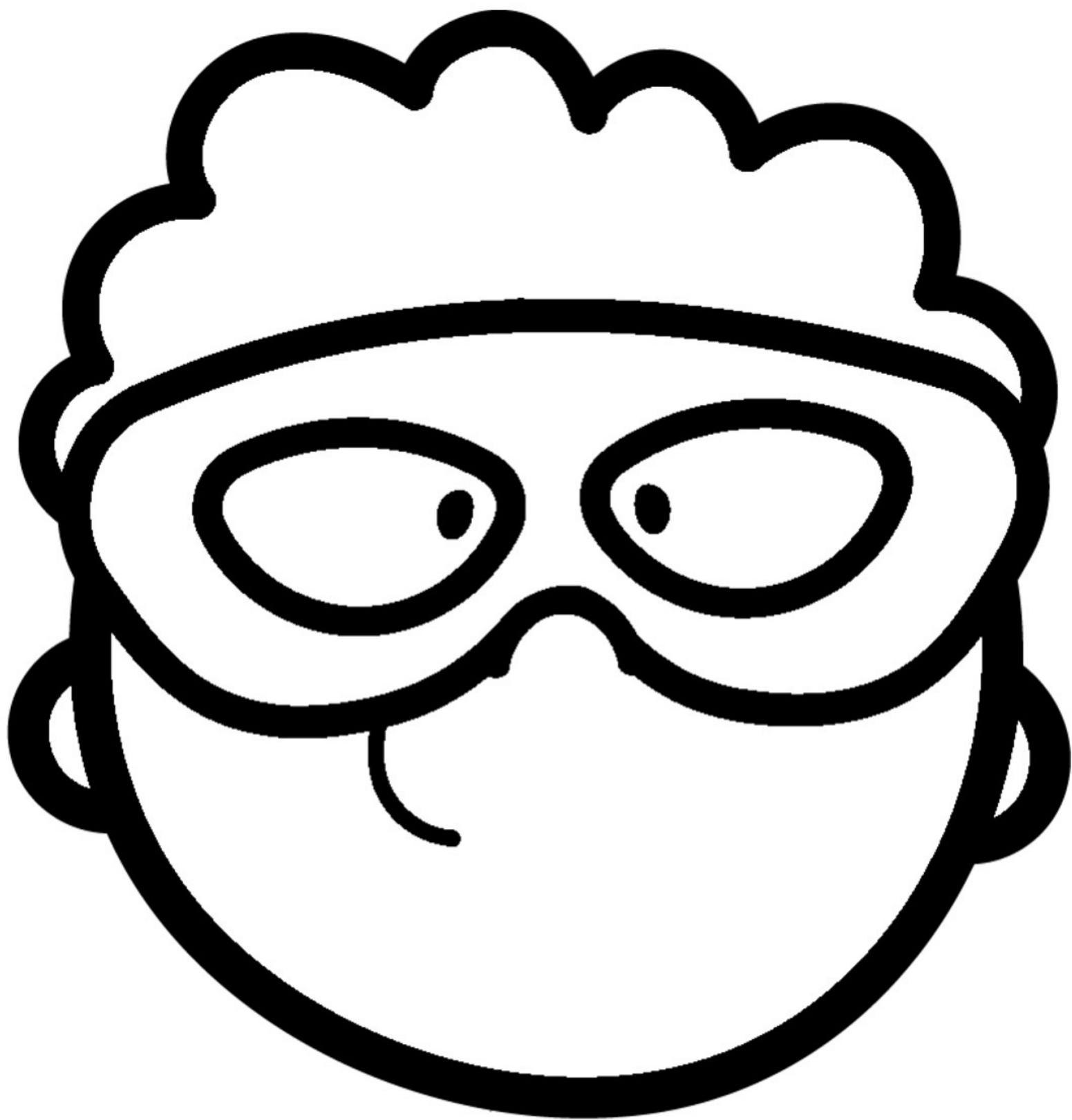
# Helper

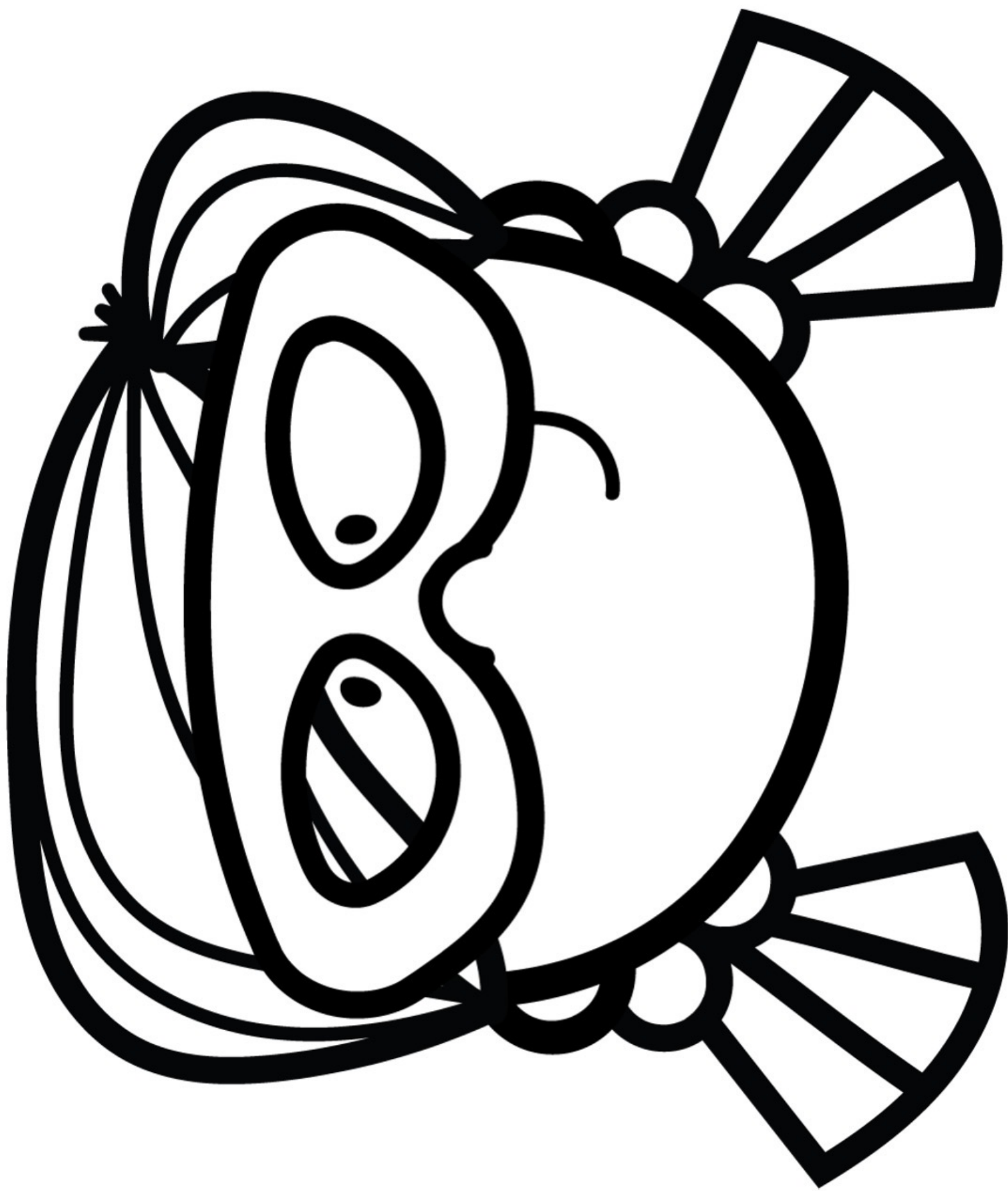


© Music City Counselor

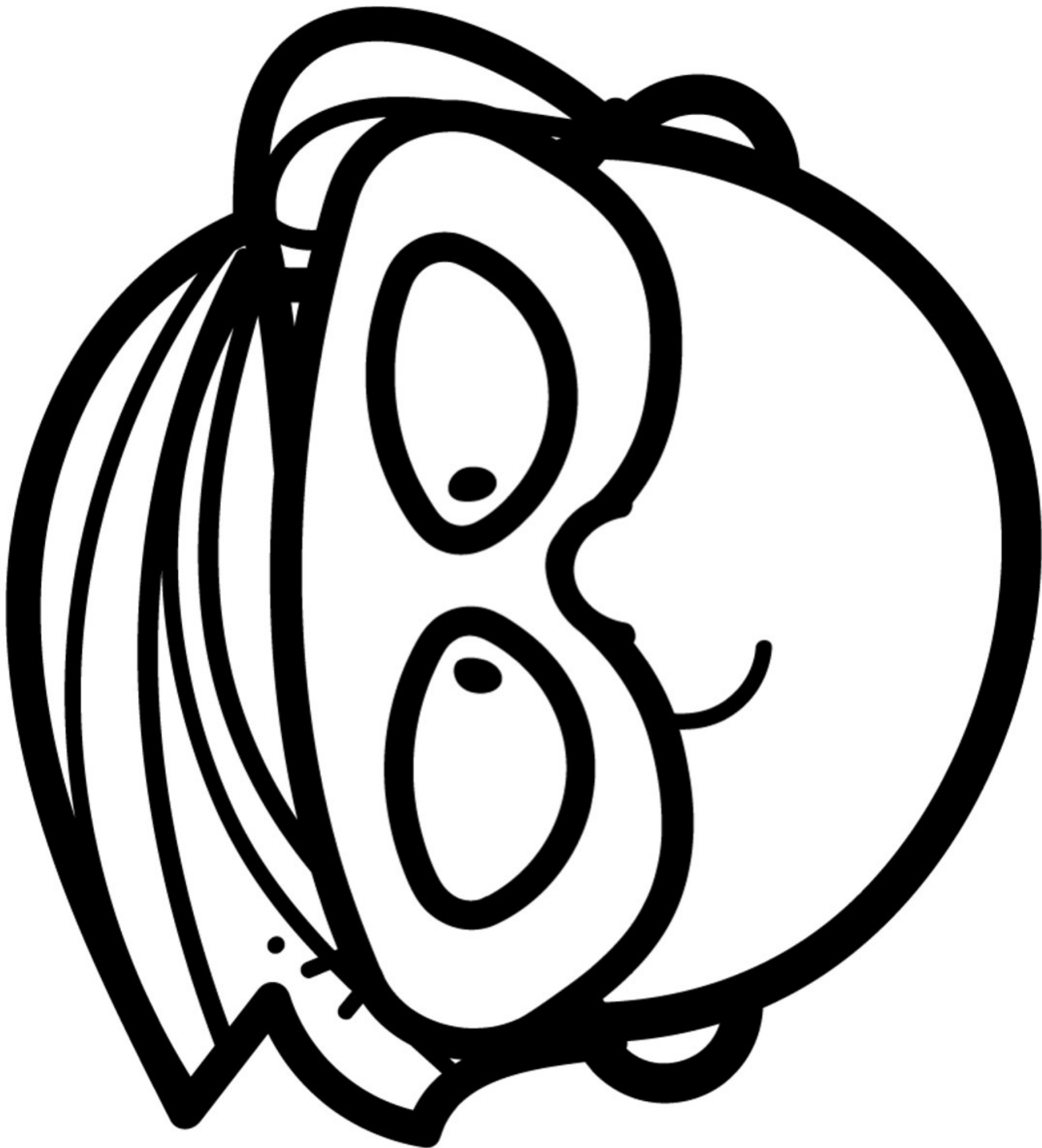


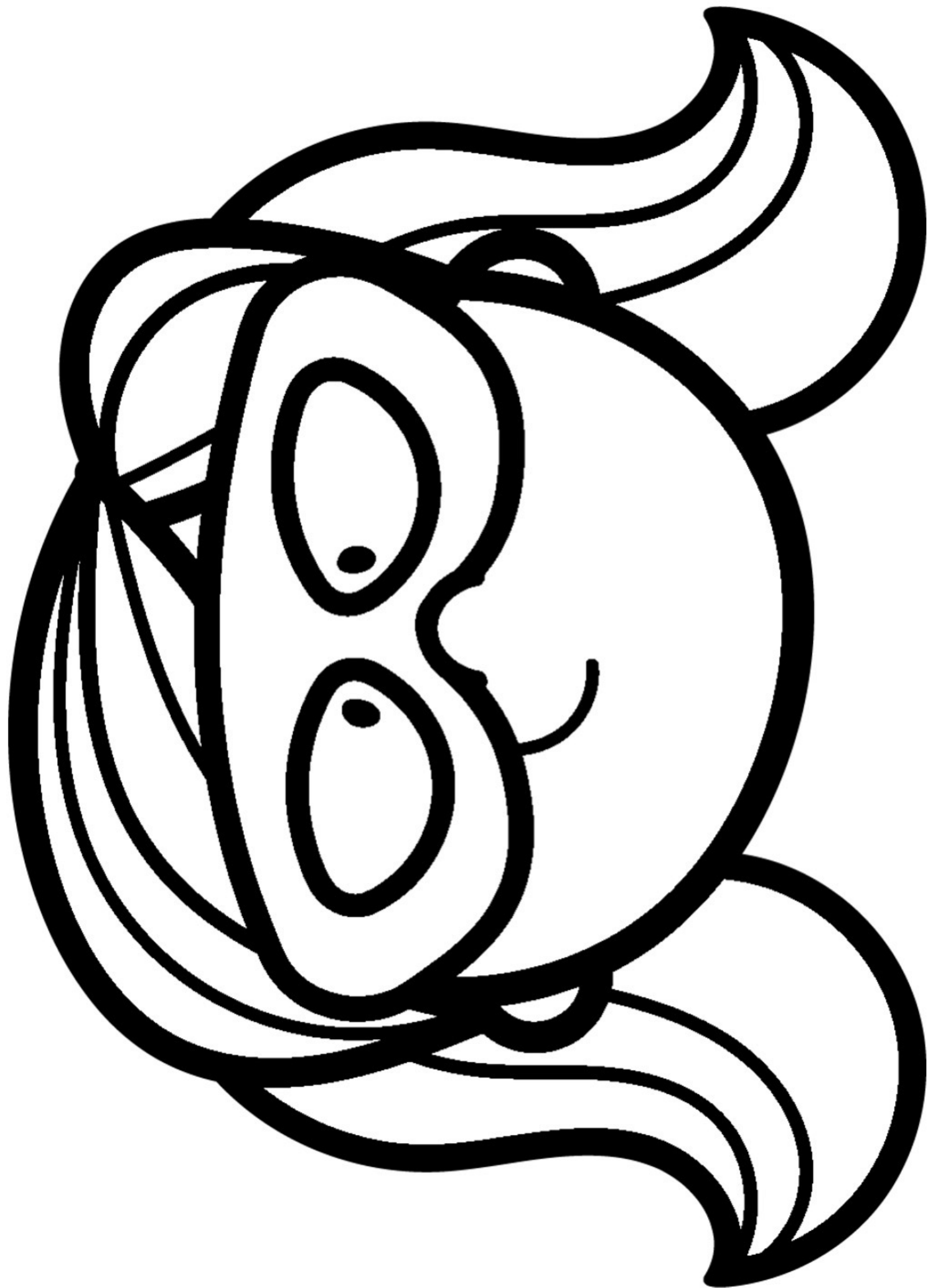
















**SUPER**  
**School Psych**



**Secret  
Keeper**



© Music City Counselor





**Kindness**



© Music City Counselor



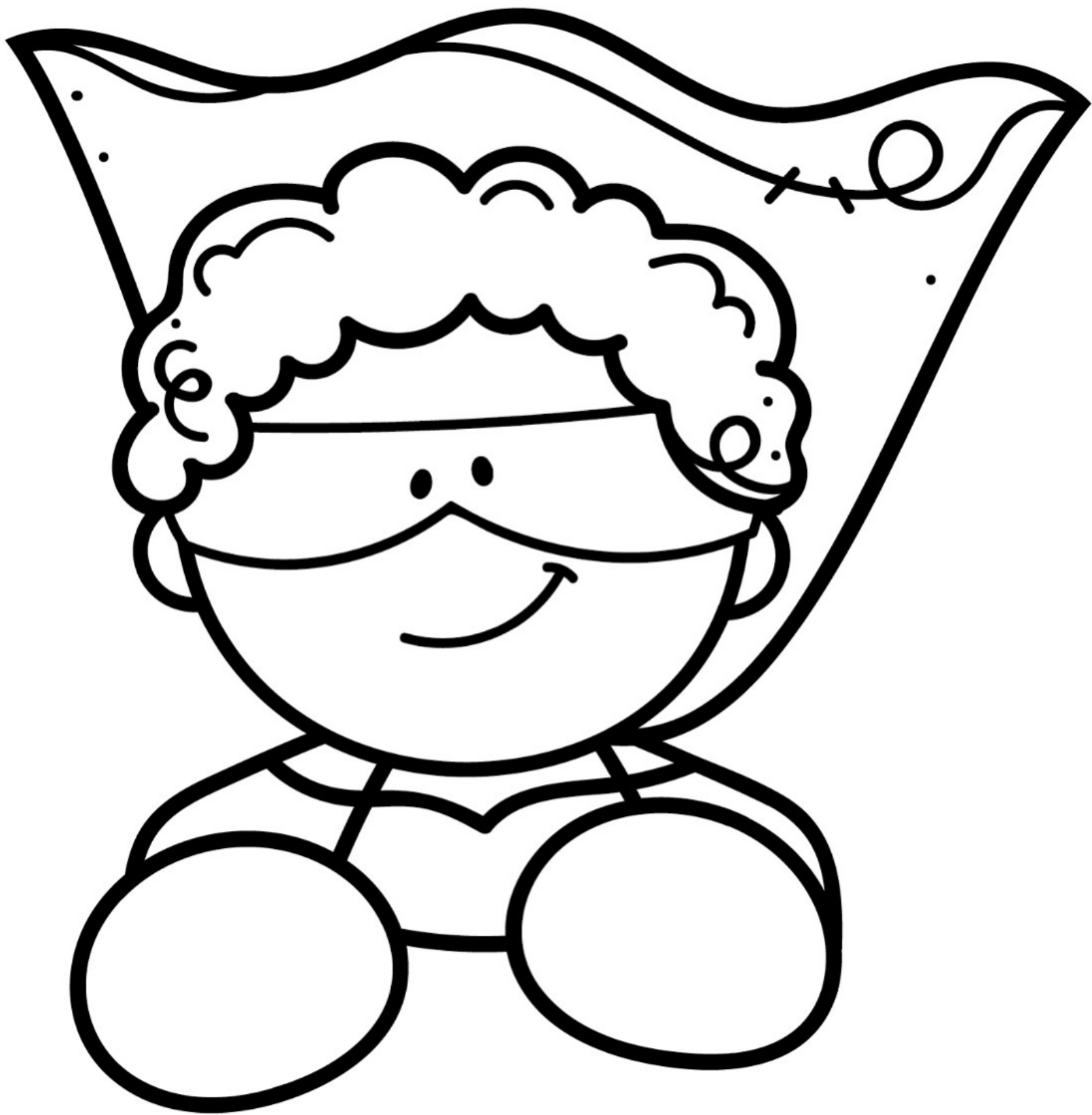


# Helper

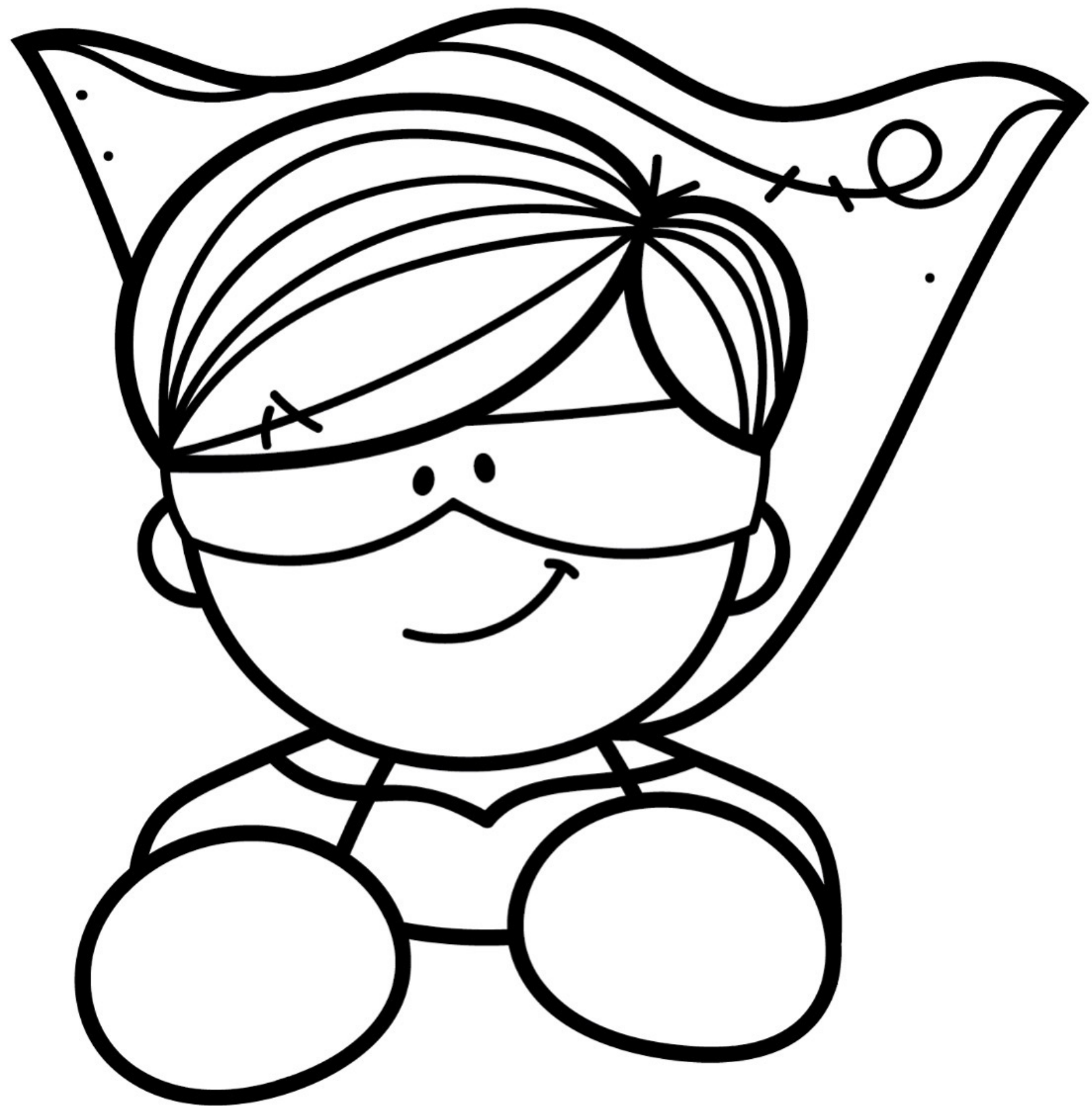


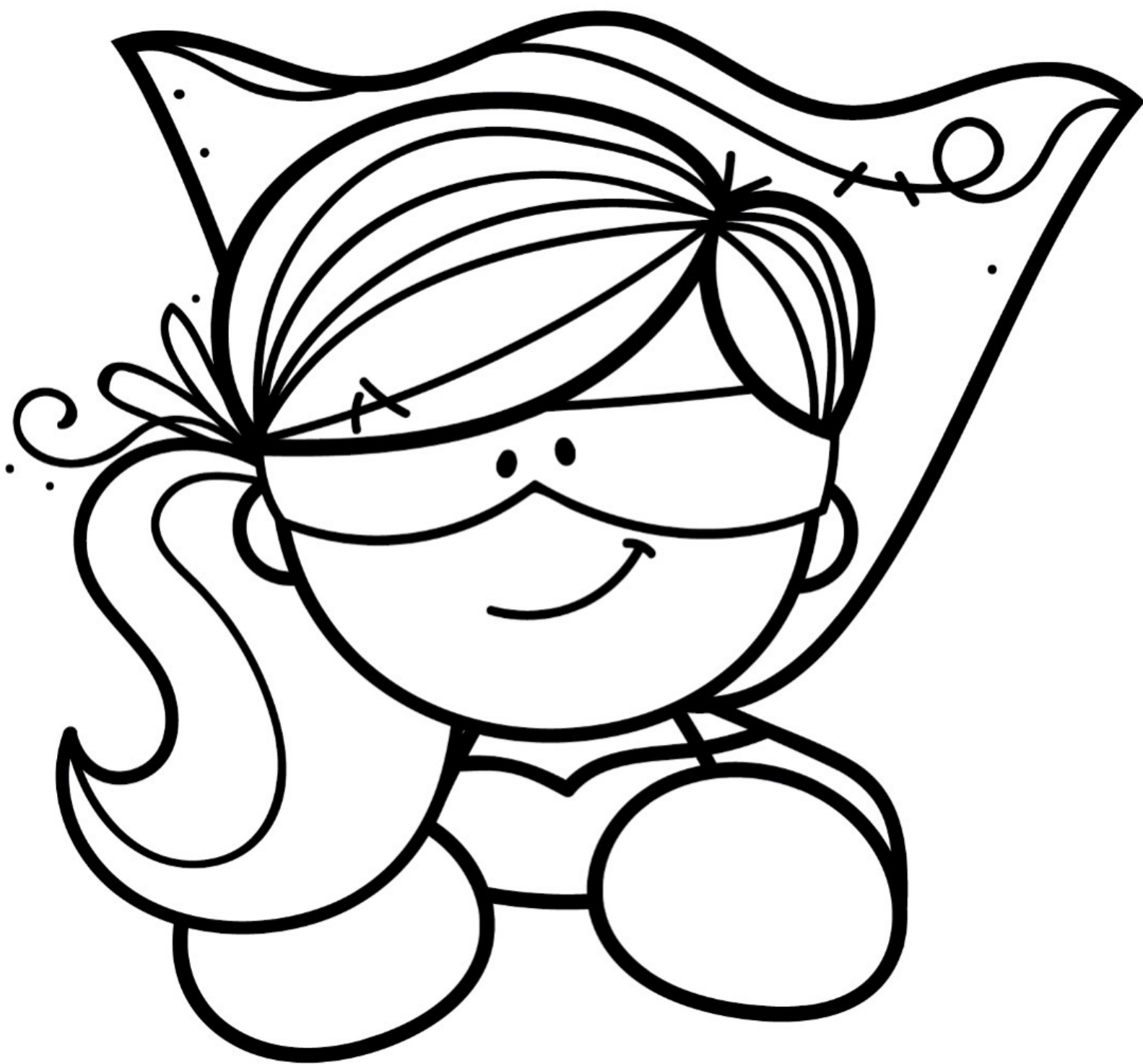
© Music City Counselor

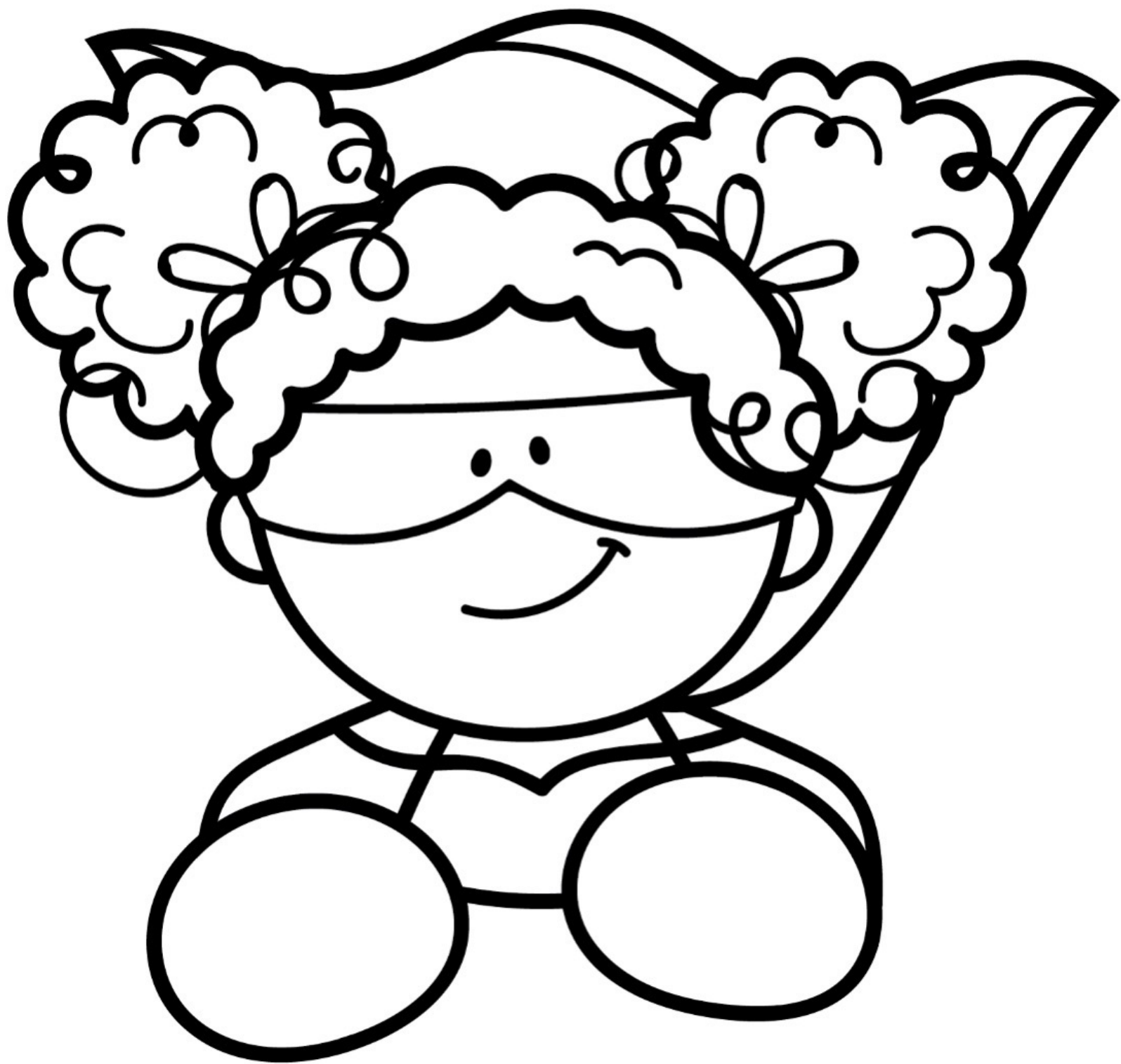
# CRAFT













Name: \_\_\_\_\_

# MY SUPER SCHOOL PSYCHOLOGIST

Which Super School Psychologist Badges does your school psychologist have? How can he/she use them to help you?

---

---

---

---

---

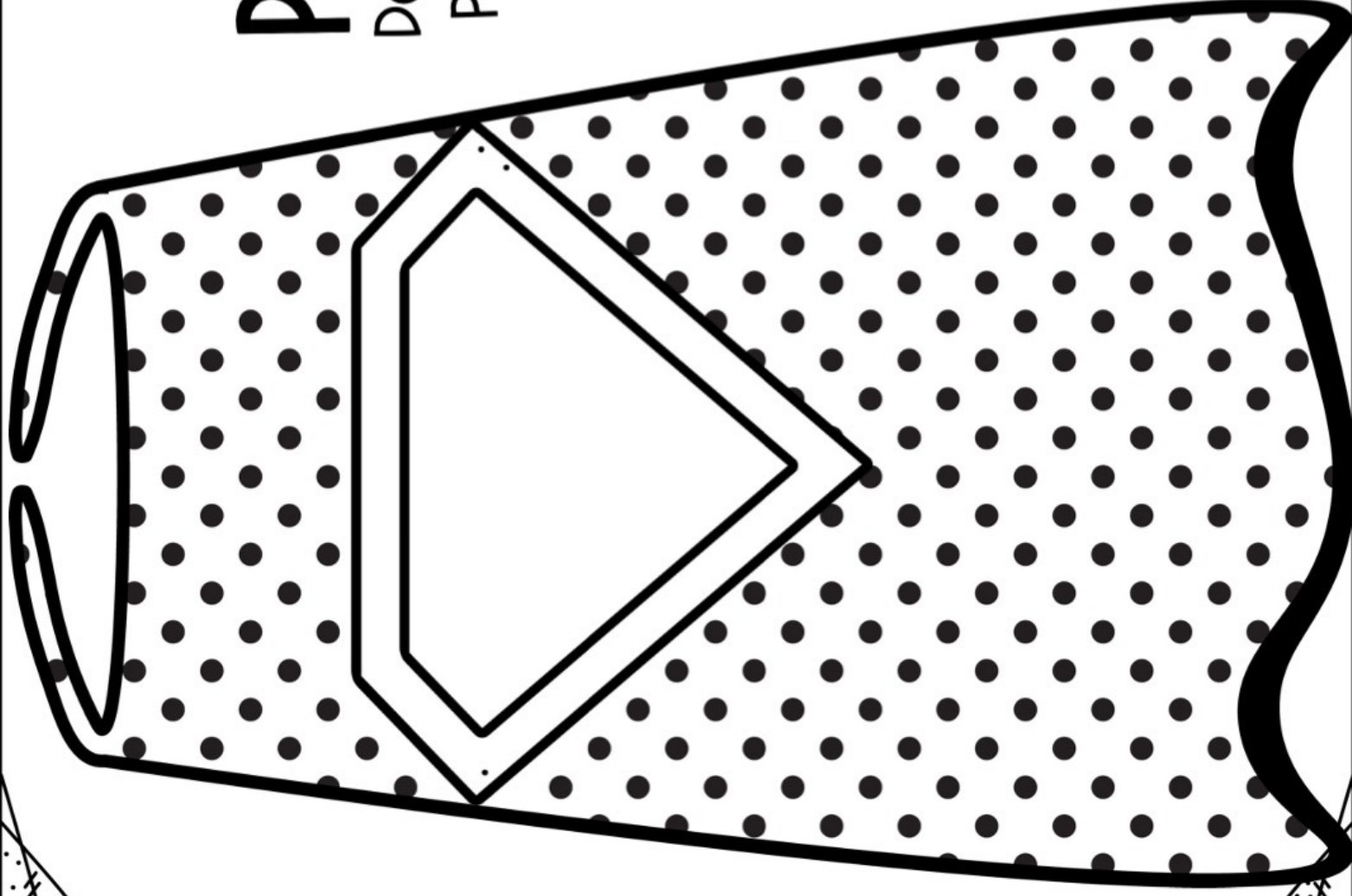
---

# **WORKSHEETS + COLORING PAGES**

Name: \_\_\_\_\_

# SUPER SCHOOL PSYCHOLOGIST CAPE

Decorate your own Super School  
Psychologist Cape. Write on the  
lines how your Super School  
Psychologist can help you.





Name: \_\_\_\_\_

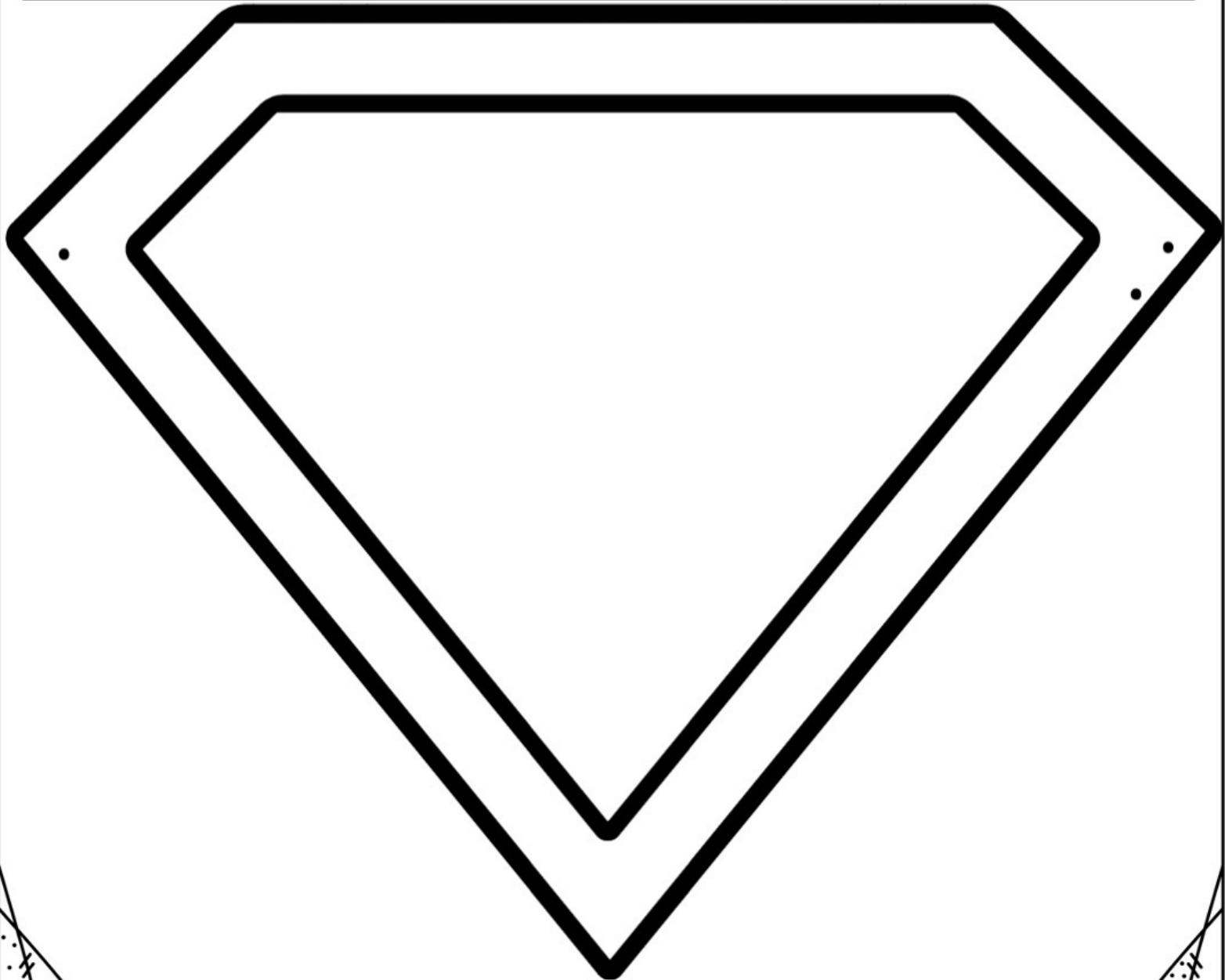
# SUPER SCHOOL PSYCHOLOGIST BADGE

Create your own Super School Psychologist Badge. Write on the lines how your Super School Psychologist can use this badge to help you.

---

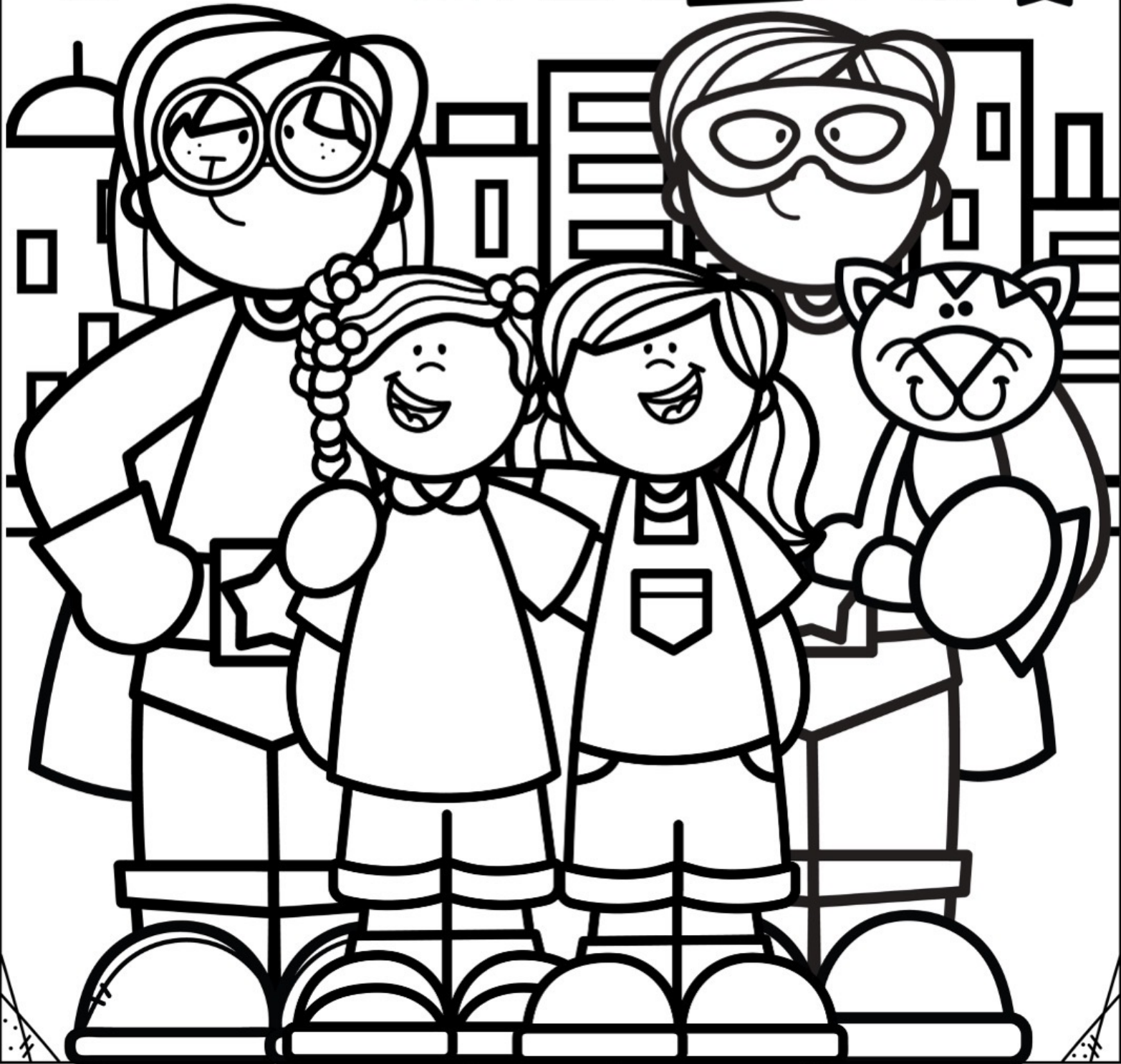
---

---



Name: \_\_\_\_\_

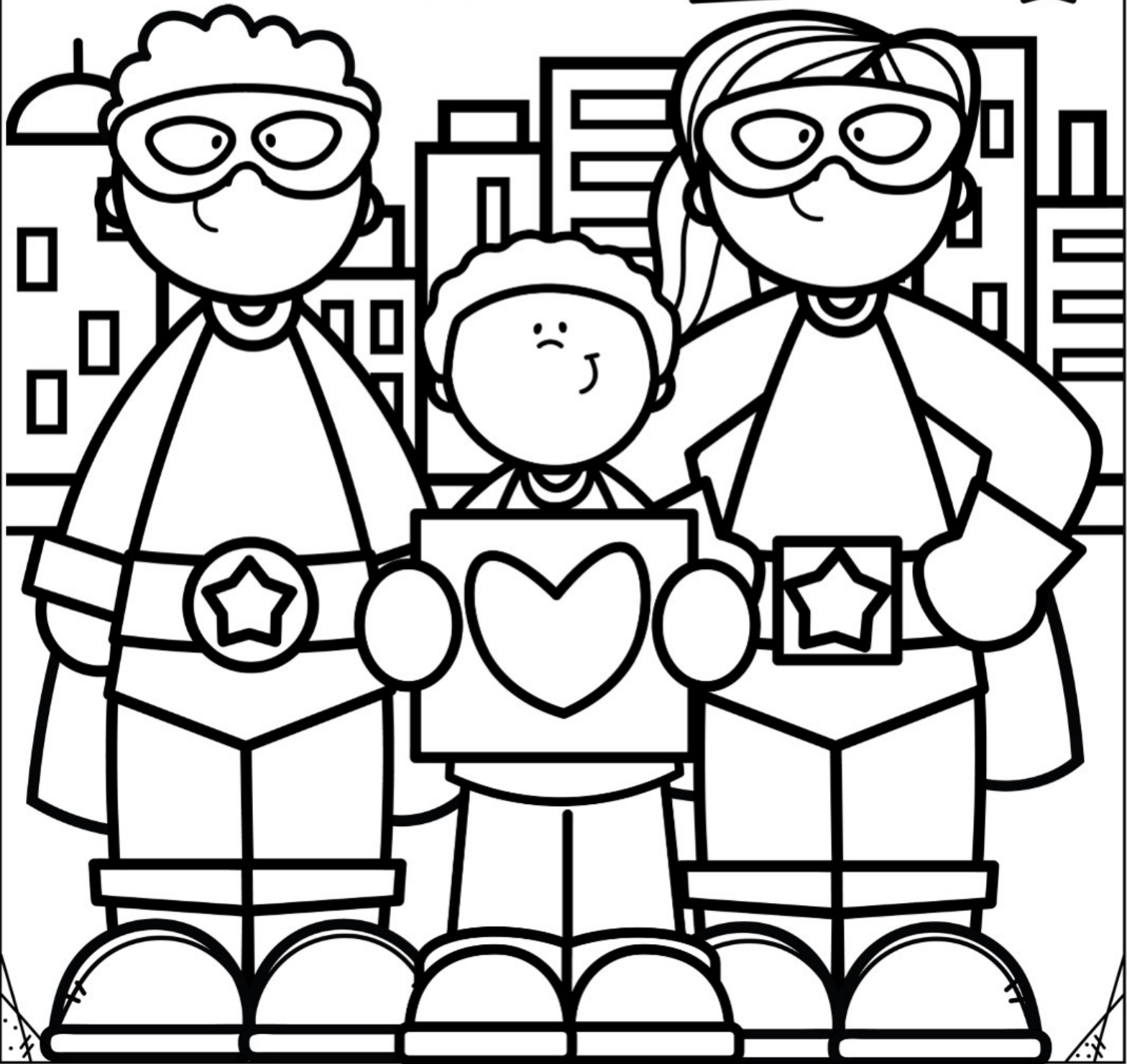
# MY SCHOOL PSYCHOLOGIST IS MY SUPERHERO!



Name: \_\_\_\_\_

© Music City Counselor

# MY SCHOOL PSYCHOLOGIST IS MY SUPERHERO!

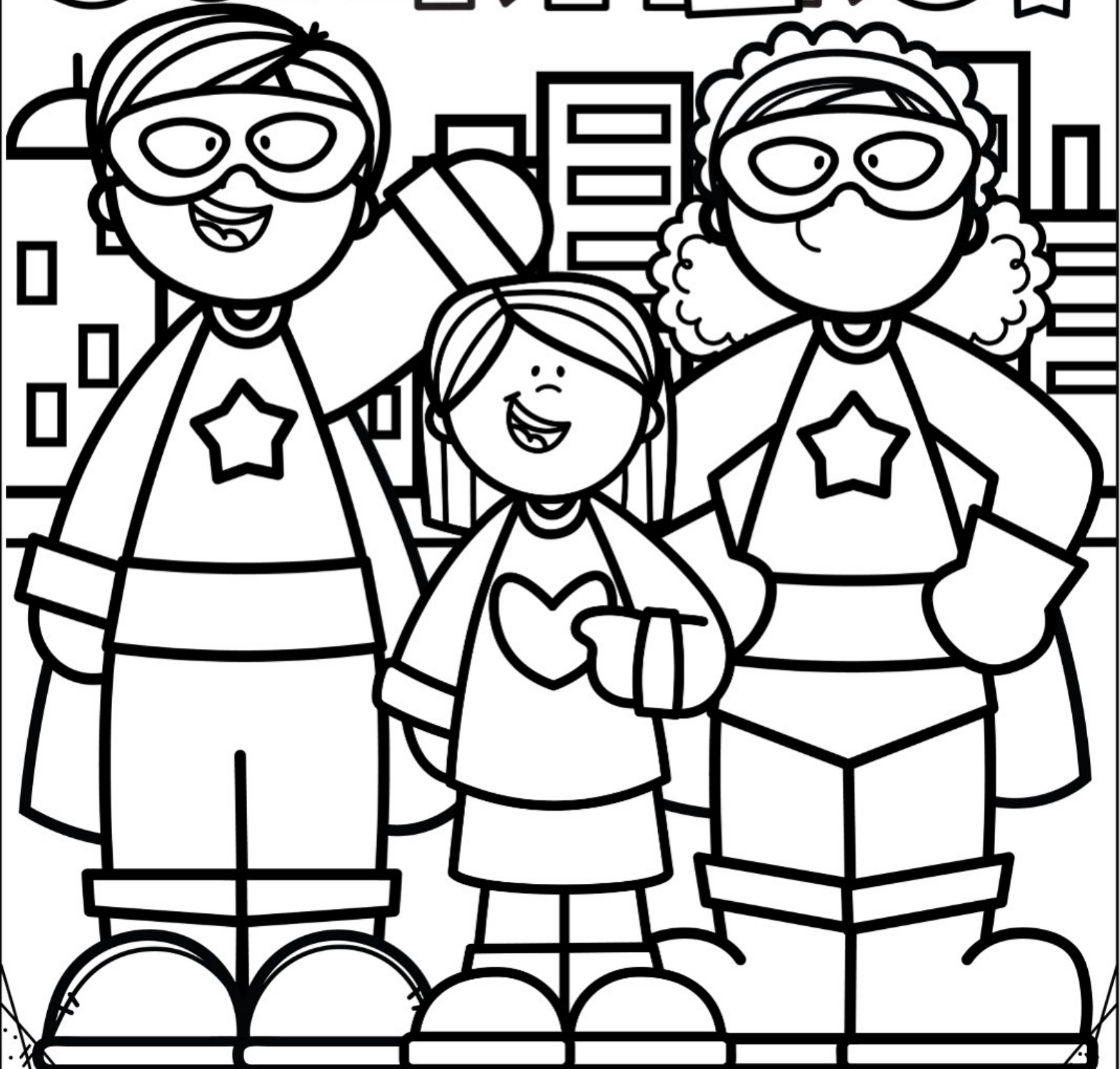




Name: \_\_\_\_\_

© Music City Counselor

# MY SCHOOL PSYCHOLOGIST IS MY SUPERHERO!



# ○ TERMS OF USE:

- Make copies for the purchaser's classroom AND share copies with other educators within your school building
- Reference (without distribution) this product in blog posts, seminars, professional development workshops, or other such venues provided there is both credit given to myself as the author and a link back to my TpT store included in the post/presentation

• YOU MAY •

- Claim the work as your own, alter the files in any way, or remove/attempt to remove the copyright
- Share this product with educators outside of your school building
- Repackage, sell, or giveaway this product to others
- Offer to share this product anywhere on the internet as a download or copy

• YOU MAY NOT •



Please contact me any time at [laura@musiccitycounselor.com](mailto:laura@musiccitycounselor.com) with questions, suggestions, resource requests, or comments. I'm here to help and would love to hear from you!

♥ *laura oathout*

THIS RESOURCE WAS MADE POSSIBLE THANKS TO:

